

Woolf Institute Calendar

2020-21

Improving relations between religion
and society through education





Welcome!

We are delighted to present the Woolf Institute Calendar for 2020-21.

Although the ongoing impact of COVID-19 (and the consequent pressures on society) will result in a challenging year ahead for all of us, the Woolf Institute remains steadfast and will continue to offer a wide range of educational programmes. In fact, helping to sustain communities and understanding the role between religion and society will, in our view, become even more important.

As you will see in the following pages, we have successfully transitioned into a new mode of working. Many of our events and activities moved online during the past months, and this will likely be the case over the course of the next year, too.

We have therefore created new ways to engage our audience and one benefit is the ease with which we are attracting a larger and more diverse worldwide public.

The Calendar gives you a flavour of our work this year and the variety of academic programmes and events, such as discussion about the effects of the pandemic on faith communities, the launch of the Woolf Diversity Study, and an exhibition of art from the Cairo Genizah. New partnerships, such as with the Society for the Medieval Mediterranean and the Hikma Foundation, will provide exciting speakers and discussion topics.

When it is possible, we look forward to hosting events again in our beautiful building and to welcoming you in person. In the meantime, new information will be uploaded as the year progresses and further details can be found at www.woolf.cam.ac.uk

As always, none of this can happen without the support of our patrons and donors, and we are immensely grateful to have been carried on a wave of support throughout the past year. We are extraordinarily grateful to everyone who makes this important work possible.

Thank you.

Dr Ed Kessler MBE
Founder Director

Dr Esther-Miriam Wagner
Executive Director

Cover: Dr Esther-Miriam Wagner with students and staff speaking at the London Research Evening.

Why does the work of the Woolf Institute matter in the time of pandemic and beyond?

Discussions about appropriate public behaviour during the COVID-19 pandemic have led to waves of indignation about perceived injustices and variation in approaches to the viral threat, exacerbating already existing polarisation between communities. This follows the known phenomenon that shortage of resources in times of crisis leads to an increase in insularity and victimisation between groups. The Woolf Institute seeks to counter this in four ways:

1. Knowing what works: data and measurement The Woolf Institute provides data, such as the Woolf Diversity Study to support rational, fact-based decision making and policy development by local and national policy makers, private organisations and public and charitable service providers. It examines what works and what does not in interfaith and social cohesion initiatives.

2. Increasing the knowledge pool The Woolf Institute facilitates grassroots engagement with issues and facts relating to past and present interfaith and intrafaith interactions (and actions in the name of different faiths). It helps people to develop a more nuanced understanding of how such matters influence everyone's life today, regardless of an individual's personal beliefs.

3. Educating current and rising sector leaders The Woolf Institute educates current and rising sector leaders through undergraduate and Masters teaching and Doctoral research. It trains sector leaders with tailored programmes for organisations like the Foreign and Commonwealth Office, the Cambridge Theological Federation and the National Health Service and hospice movement. Current and rising leaders also draw on knowledge pool resources to supplement and update their learning and support what they teach about the issues to others.

4. What next and why? Woolf Institute 'What works?', 'Knowledge Pool' and 'Educating Leadership' programmes are founded on robust academic research by Institute researchers. Research is the strong foundation on which equitable change is built. It is an essential activity at the Institute, providing current and future data sets and policy recommendations, learning resources and activities and measures of success to chart and promulgate progress.

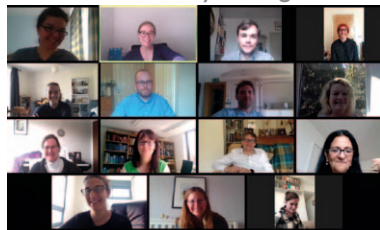
In times of crisis, the Woolf Institute's work to combat polarisation is more important than ever. Join us in countering prejudice and intolerance by engaging with our work and supporting us.

Find out more about joining the Friends of the Woolf Institute on p. 21

Teaching, Events & Outreach

Regular Events

Webinars Weekly during Term



After the onset of the COVID-19 pandemic, our staff brainstormed ways to continue conducting public and academic events discussing issues connected to faith and society. By using the webinar platform, we have hosted hundreds of participants for interactive sessions with leaders in their fields, including an opportunity for questions afterwards. Topics

ranged from the relationship between faith and its representation on Netflix, to how the different faiths responded to the pandemic in relation to worship and community, then on to historical content, which focused on relations between faiths in Medieval Iberia. In the coming year, we will continue hosting webinars during academic term-time, with topics such as Religion and Humour and Representations and Realities of the Jews of Ireland. All webinars will be announced at

woolf.cam.ac.uk/whats-on/events

Woolf Lecture Series Termly

This series, which has included lectures from some of the greatest names in the world of interfaith relations, continues. It offers insights from senior British and international academics, politicians and activists. woolf.cam.ac.uk/whats-on/events

Podcasts Wednesdays

Naked Reflections is a weekly podcast produced in partnership with *The Naked Scientists*. Reflecting on recent science news stories and current events, authoritative thinkers unpack the implications for society with Dr Ed Kessler. More details woolf.cam.ac.uk/podcasts/series/naked-reflections

Blogs Throughout the year

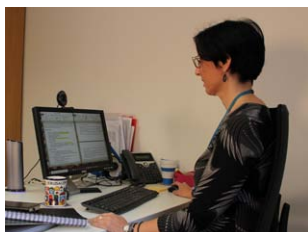
Curated by Dr Emma Harris, the Institute publishes dozens of blogs every year on a wide variety of interfaith subjects. Check our website regularly for the latest.

woolf.cam.ac.uk/blog

Reading group: Qur'an and Bible Termly

This reading group, convened by Rick Sopher and chaired by Dr Esther-Miriam Wagner, is anchored in a project which compares Torah portions of the week to the relevant Qur'anic passages. Matters discussed will include similarities and differences in biblical and qur'anic narratives, infallibility of prophets, scriptural hostility, the availability of Jewish sources in Arabia in the 7th century and the benefits of studying one another's scriptures.

Michaelmas Term 8 October - 6 December 2020



Online Course Religion is... 21 Sept-6 Dec

In this course, religious pluralism will be studied as both the sociological fact of diversity in many societies around the world and as a political paradigm for fostering peace and cooperation within diverse populations. In keeping with our desire to engage participants with purposeful lessons, we will also be taking into account the significant and

unprecedented impact of the COVID-19 pandemic on religious practice, amongst other themes. woolf.cam.ac.uk/study/online-courses/religion-is

Art History from Below – the Imagery of the Cairo Genizah Autumn

This exhibition will invoke the memory of Mizrahi Jewish culture by bringing together Genizah fragments dating from the early Medieval period to the 19th century. Scattered among the fragments of Judaism's literary history, one can find vestiges of an artistic tradition that veers from the careful painting of proficient scribal-artisans, through the rougher renderings of animals and flowers that adorn more modest 'user-produced' books, to the crude scorpions and djinns of esoteric texts. The catalogue will be available online. Contact enquiries@woolf.cam.ac.uk

Launch Announcement: Woolf Diversity Study October

The findings of this major report, including policy recommendations, are based on a national-representative survey of 11,000 adults living in England and Wales. It explores experiences of and attitudes towards diversity in the UK based on ethnicity, nationality and religion.

woolf.cam.ac.uk/research/projects/woolf-diversity-study

Woolf Institute and the Society for the Medieval Mediterranean

Webinar Episode 1: Emotion Michaelmas

The Society for the Medieval Mediterranean is dedicated to all aspects of the academic study of Mediterranean history and culture, from the 5th to the 15th centuries C.E. The webinars, organised twice per term with the Woolf Institute, will explore various facets of relations between different religious communities around the Mediterranean.

Middle Eastern Judaism and Islam Webinar Episode 1 12 October, 5pm

In this series, Dr Merav Rosenfeld-Hadad will interview four fascinating and successful Middle Eastern women, who will share their views on diplomacy and journalism, family and social life, food and the arts and cross denominational relationships. This week Linda Menuhin, a journalist and advisor for the Institute of Israeli Digital Media in Arabic, will be talking on Iraqi-Israeli reconciliation.

Shtick! Humour, Satire and Religion Webinar October - December, 5pm

Five webinars investigating connections between modern comedy, satire and religion through some of their most famous appearances in pop culture. Dates are: 14 October, 28 October, 11 November, 25 November and 2 December.

Middle Eastern Judaism and Islam Webinar Episode 2 26 October, 5pm

Lily Shor, the Director of External Relations and Events at the Babylonian Jewry Heritage Center, will reflect on her happy childhood in difficult times from 1951-71.

Conference: Religion and Climate Change: Politics, Perceptions and Radical Potentials Afternoon, Michaelmas

Further Information can be obtained from Dr Tobias Müller tm498@cam.ac.uk. See p. 15 for details of his other research project.



Research Day 2020 4 November All Day

Our annual Research Day, highlighting the work of Woolf Institute researchers and associates in 6-minute presentations, will be streamed live allowing you to be part of it wherever you are in the world.
woolf.cam.ac.uk/research/researchday2020

Religion & Society Webinar Episode 1: What Have We Learnt From COVID-19? November

This series of conversations with Dr Ed Kessler and two international faith leaders is moderated by Dr Esther-Miriam Wagner. In the first episode, they will be discussing how COVID-19 is changing the role of religious buildings. Contact cc640@cam.ac.uk

Woolf Institute and the Society for the Medieval Mediterranean Webinar Episode 2: Disruption Michaelmas See website for more details.

Middle Eastern Judaism and Islam Webinar Episode 3 9 November, 5pm

Food writer, chef and artist, Linda Dangoor on her journey from Baghdad/

Middle Eastern Judaism and Islam Webinar Episode 4 23 November, 5pm

Niran Bassoon, television presenter and Director of the Iraqi Cultural Forum in London, will discuss building bridges between Jewish, Muslim and Christian Iraqis.

Religion & Society Webinar Episode 2: What Have We Learnt From COVID-19? December

In the second episode, panelists will be discussing the impact of COVID-19 on faith and gender. Contact cc640@cam.ac.uk

Lent Term 14 January - 13 March 2021

Bridging the Great Divide: the Jewish-Muslim Encounter

11 January – 25 April

This online course is committed to the highest levels of scholarly integrity and will provide a space for discussion of the entire range, in the broadest sense, of the Jewish-Muslim encounter, including even the most controversial issues.

woolf.cam.ac.uk/study/online-courses/bridging-the-great-divide-the-jewish-muslim-encounter

Religion & Society Webinar Episode 3: What Have We Learnt From COVID-19? January

In the third episode, Dr Ed Kessler and two international interfaith leaders will discuss how COVID-19 is affecting interfaith relations around the world. Contact cc640@cam.ac.uk

Reflections on End of Life Care in the Pandemic Webinar Lent

The Woolf Institute's End of Life Care Handbook serves as an active resource for those caring for individuals of faith at the end of their life. Introduced by Dr Katherine O'Lone, the panel discussion will centre around how religious practices at the end of life were affected by the COVID-19 pandemic.

www.woolf.cam.ac.uk/outreach/healthcare

The Jews of Ireland Webinar Series Lent

This series will explore representations and realities for Jews of Ireland in the economic and professional space and encounters with political and religious discourse. Moderators are: Research Associate, Dr Trisha Oakley Kessler, Dr Róna Ní Fhrighil (University of Galway), Dr Barry Montgomery (University of Ulster) and Dr Natalie Wynn (Trinity College Dublin).

Woolf Institute and the Society for the Medieval Mediterranean Webinar Episode 3: Insularity Lent See website for more details.

London Research Day February

Bringing the best presentations from our Research Day to the Metropolis. Central London location. Contact development@woolf.cam.ac.uk

Woolf Institute and the Society for the Medieval Mediterranean Webinar Episode 4: The Law Lent See website for more details.

Easter Term 21 April - 12 June 2021

People of the Book: An Exhibition of Bookplates

21 April - 5 October 2021

Bookplates representing the Abrahamic faiths, various techniques and centuries, from the collection of Dr John F. Mueller, on display in the library. Contact jfm39@cam.ac.uk



Conference: Religion and Numbers May All Day

A conference to share and publicise international scholarship on religion and religious groups, with a specific focus on the use of quantitative data and mixed method approaches. The event is supported by a generous donation from the **Spalding Trust**. Contact jh970@cam.ac.uk

State Righteousness: Intersecting Politics of Reproduction, Religion and Right-Wing Nationalism Spring

Stemming from our growing concern with the ways reproduction is systematically centred within new expressions of state righteousness, this international workshop aims to critically examine the nexus of religion and reproductive politics globally across different national cases. Contact lz378@cam.ac.uk

Woolf Institute and the Society for the Medieval Mediterranean Webinar Episode 5: Family Life Easter See website for more details.

Long Vacation 13 June - 5 October 2021

Woolf Institute Summer School 2021 5 – 16 July

Religion and Society from the Medieval to the Modern – introduces students to the study of religion in society and to different aspects of the history of interfaith relations in Europe and in the Middle East. Students will explore themes such as communal identity and segregation policies and have the chance to learn about contemporary and controversial issues, such as Antisemitism and Islamophobia. Contact eth22@cam.ac.uk

Tea at the Institute 25 September 2021

An informal event hosted by the Executive Director of the Woolf Institute, Dr Esther-Miriam Wagner, with a series of short presentations by our researchers and teachers. These provide an insight into the projects upon which Woolf outreach and education activities are founded. Contact development@woolf.cam.ac.uk

News

New Chair of Trustees: Shabir Randeree

Shabir Randeree CBE has taken on the role of Chair of the Board of Trustees of the Woolf Institute, succeeding Lord Blair of Boughton QPM. We are most grateful to Lord Blair, who remains on the Board as a Trustee, for the immense experience and expertise that he brought to the role as the Institute constructed and took up residence in its purpose-built Cambridge home during his four-year tenure.



New Chair of the
Board of Trustees

Shabir is an entrepreneur and philanthropist. He is the Chairman of DCD Group, experienced in Finance, Commercial Real Estate, Venture Capital and Banking. He is the Deputy Chairman of Al Baraka Bank South Africa, former Chairman of EILB Bank plc and Founding Director at IBB Bank plc. In the charitable and voluntary sector, Shabir is Chancellor of the University of East London, a Council Member Trustee of The Prince's Trust and Chair of Mosaic. He is Chair of Governors of Westminster Academy, a Champion of the Faith and Belief Forum and sits on the International Board of Young Presidents' Organisation (YPO). Shabir was made a CBE in 2013, for services to business and education and his charitable support.

Dr Katherine O'Loone appointed Outreach Manager

Dr O'Loone is 'delighted to take up the Outreach Manager position at the Institute and profoundly grateful to the donors whose generosity made it possible. The post affords incredible new outreach and research opportunities for me and the Institute. It is a privilege to be given the chance to transmit the work of the Institute to a wider audience and be involved in maximising our impact at all levels.' Dr O'Loone has been promoted from her previous role as Researcher and Public Education Officer on the Institute's *Measures of Success* project (see p12), which she will continue to completion in March 2021, whilst developing and co-ordinating the wider Outreach.



Dr O'Loone at an
Outreach event in
London

Diversity in End of Life Care

This programme has trained hundreds of healthcare professionals and volunteers working in hospice and hospital contexts. With the support of the **D'Oyly Carte Charitable Trust** and **Rank Foundation**, the Institute produced its resulting Diversity in End of Life Care Handbook in 2019. The Handbook complements the Institute's

face-to-face training and also serves as an active resource with which delegates can encourage colleagues to consider religious and/or cultural sensitivities when caring for patients and their families. The second iteration of the Handbook will incorporate research conducted during the lockdown period through interviews with healthcare professionals and religious authorities, documenting how this unprecedented situation has affected religious practices for end of life care.

www.woolf.cam.ac.uk/outreach/healthcare

William Kessler 1927-2019



Willie and HRH The Princess Royal

Willie Kessler was a great supporter of Woolf Institute and an inspiration to our founder, his son, Dr Ed Kessler. Willie believed in the Woolf Institute vision from inception. He always encouraged the staff and researchers and generously supported our work. Willie and the Kessler family contributed to the capital campaign for our beautiful building and most recently created the Willie and Jo Kessler Masters Studentship for MPhil students of Middle Eastern Studies specialising in Muslim-Jewish Relations. His support and influence have been instrumental in our success and he will be sorely missed. An Essay prize for 16-22 year olds has been named in his memory. Please contact as2818@cam.ac.uk for further information.

100th Anniversary of Ian Karten's Birth

The Ian Karten Network celebrates what would have been Ian's 100th birthday this year. The collaboration between the late Ian Karten MBE and the Woolf Institute can be traced back to his own personal support for our formation. Ever since then, the Institute has been privileged to receive funding for postgraduate students from the Ian Karten Trust. They have supported up to five students a year. In 2001, these students had part of their course taught online - a pioneering initiative at the time. In recognition of Ian and his Trust's support, a meeting room at the Institute is named in his honour.

Fellowship in Shi'i Studies



2020 Visiting Fellow
Sheikh Nuru
Mohammed

We are very pleased to continue our collaboration with the Hikma Foundation on the Lady Khadija Visiting Fellowship in Shi'i Studies, with the vision to promote Shi'i Studies in academia. The Fellowship is a notable development in contemporary Islamic Studies towards a more reflective, decolonised and engaged approach to scholarship, accompanied by a number of events, such as webinars/seminars, and an Iftar.

Research

Faith in a Pandemic

In these difficult and unprecedented times, how do faith communities stay connected while in isolation? How does religious practice carry on when people are so far apart? What will the long term impact of coronavirus be on faith?

From March to June 2020, Dr Ed Kessler MBE undertook more than 50 interviews with religious leaders and scholars from the UK and Overseas for the COVID-19 Chronicles.

With Woolf Institute Research Fellow, Dr Lea Taragin-Zeller, Dr Kessler is researching areas of connection and contention, beginning in the UK, but also extending overseas from South Africa to India and Japan to the Americas. COVID-19 is making people think about what community means and how to improve the way they live their lives. This research will examine how diverse communities are coping with COVID-19, especially in terms of adaptability, perseverance and sense of community. There are a number of common themes, such as asking 'Big Questions' and wider participation in worship, but also differences. You can watch the COVID-19 Chronicles online at woolf.cam.ac.uk/videos



COVID-19 testing at the
Central Laboratories of
the Ministry of Health,
Jordan
IAEA Imagebank



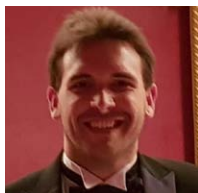


Measures of Success

Dr Katherine O'Lone's fieldwork has identified key areas that are considered critical when assessing the success of interfaith engagement. The clearest finding is that success is strongly related to psychological changes in the participants, for example changes in attitude and revision of belief. The result of this fieldwork was the construction of a list of indicators which will now be piloted in a range of interfaith initiative settings. The data gathered in this phase of the project will be crucial for compiling a refined set of indicators, which will then be tested further. This project is an important step in providing robust evaluation techniques for interfaith engagement. The results will be submitted for publication in sociology and religious studies journals and developed into a report for practitioners of interfaith engagement and their funders. A series of webinars and podcasts may also be produced.

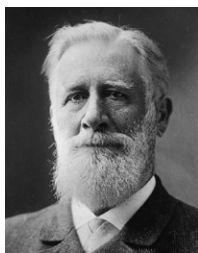


A collage encountered during fieldwork



British Islam & English Law

Dr Patrick Nash is working to finish his book, *British Islam and English Law*, for the 'Law in Context' series by Cambridge University Press. The project is due for completion in 2021 and aims to place the relationship between English civil law and British Islam on a more principled and practical footing. The theoretical aspect of the research analyses the two most influential models for regulating religion – liberal individualism and multiculturalism – and finds them wanting in important ways across various sectors affected by the growth of Islam. It argues for an alternative regulatory model, liberal pluralism, which focuses upon the protection of institutions and is better able to address unofficial normative systems generated by Islam and associational activity more generally within civil society. The applied side of the project examines multiple (non-criminal) fields of English law – family, charity, education, finance, representation, immigration – in order to identify problems and design workable reforms with a view to reducing tensions and easing integration.



The German legal scholar and historian Otto von Gierke (1841-1921)

Woolf Diversity Study

For the past 18 months, **Dr Julian Hargreaves** and Dr Ed Kessler have been exploring ethnic, national and religious forms of diversity applying data from a survey of 11,000 adults across England and Wales. Respondents were asked about their attitudes towards marrying someone from a different background, the levels of diversity among friendship groups and within the workplace, and attitudes towards migrants and demographic change within local neighbourhoods and across Britain. The project will be launched with a full communications strategy that targets mainstream national media.

Antisemitism Online

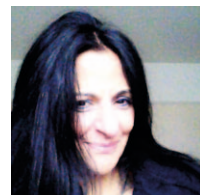
Dr Julian Hargreaves is also engaged in Antisemitism Online, a project conducted in partnership with two leading British Jewish organisations. Begun in May 2020, the project uses social media data collected from Facebook, Instagram, Twitter and YouTube to address a series of questions concerning the role of social media as a conduit for anti-Jewish hatred. Findings will be used to guide policy making and help protect British Jewish communities.

Living in Harmony

Dr Merav Rosenfeld-Hadad is a Research Fellow and Co-PI for the *Living in Harmony* project, funded by the **K C Shasha Charitable Foundation**. She is working on a book that analyses original material in Arabic, Judaeo-Arabic and Hebrew, which she gathered during fieldwork in Israel and the UK through interviews with Baghdadi-born Jews, Muslims and Christians. Her book is based on the interviewees' vivid and powerful memories, which narrate the course of events and share the soul and spirit of those involved. The book is an exploration of Baghdadi Jewish life and culture between 1850 and 1980, a period that marks the last phase of Jewish life in Baghdad and of the Jewish-Muslim coexistence that had flourished there. The book is planned for publication in 2022 and two related aspects of Merav's research will be published in 2021 as book chapters. The first is on Ḥakham Yosef Ḥayim and his leadership, as reflected in his songs and the second is on Iraqi Jewish-Muslim-Christian coexistence in London.



Goethe's Colour Theory
Freies Deutsches Hochstift



Murjan Mosque,
Baghdad, 1918.



Historical Research

While most of the research projects at the Woolf Institute are concerned with contemporary social sciences, we also appreciate the importance of approaching the interactions between the faiths from a historical perspective. Therefore, quite a few of our affiliated researchers and students work on historical themes. Spanning from the Abbasid caliphate, through Medieval Egyptian merchants to Early Modern

traditions shared between the faiths, our research projects investigate how Jews, Muslims and Christians interacted on issues related to faith and day-to-day life. Indeed, much of our historical projects are concerned with relations between religious communities in the pluralist societies of the Middle East and Spain. Particularly notable are our projects which examine medieval and early modern mercantile networks of Jews,

Muslims and Christians in the Mediterranean, as well as trade networks in the late Mamluk and Ottoman periods, which are filling notable lacuna in the historic and linguistic literature. Most of these are led by our Executive Director,

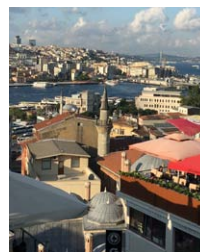
Dr Esther-Miriam Wagner.

Through these investigative projects, the Institute hopes to spark rigorous academic debate on these important historical phenomena. In addition, we hope to promote a renewed understanding in modern society about the ways in which different religious communities coexisted and shared geographical spaces in a prolific and productive manner.

Genizah fragment.
Classmark T-S Ar. 51.112,
Reproduced with kind
permission of the Syndics
of Cambridge University
Library

Syrian Musicians in Turkey

Woolf Institute PhD Scholar **Dunya Habash** is in Turkey to conduct her fieldwork in Istanbul and Gaziantep. Her project seeks to understand and document the effects of migration, more specifically forced migration, on the production of cultural practices and imaginaries through ethnographic research with Syrian musicians. In other words, how space, place and identity interact as people of various faith communities rebuild their lives away from home. The work combines methodologies from forced migration studies and ethnomusicology. In the last year, Dunya completed her First-Year Report with an extensive literature review and had a paper accepted at the annual British Forum for Ethnomusicology in Bath, which is scheduled for April 2021.



Istanbul, taken during the *Living in Harmony* field trip in 2018

Dunya has also been engaged with the *Living in Harmony* project with Dr Rosenfeld-Hadad (see p 13). A core mission of the project is to create and implement an outreach programme that translates research findings into tools for public education, especially working with young students in the UK. In the past year Dunya and Alissa Symon created and conducted engaging workshops in a number of schools in Greater London, involving 350 students.

Strictly Observant Religion, Gender and the State

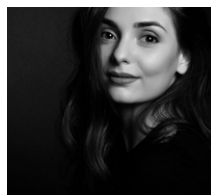
This research project investigates the interactions of religious groups and the state over questions of sexuality and gender. The project, led by Dr Ed Kessler and **Dr Tobias Müller**, asks how religious groups cooperate with, challenge and resist the different levels of state bureaucracy regarding topics such as the role of women, homosexuality, sexual abuse and sex education in schools.



Fieldwork has been conducted in Brent and Hackney and the final report will be completed in Michaelmas 2020. This project has been generously support by the **Kessler Family**.



Religion and the State clash: London Rabbi Jeffrey Newman arrested at 2019 Extinction Rebellion protest



Judaeano-Arabic Medical Manuscripts

Ani Avetisyan is looking at The Matenadaran MS No. 1751, an 18th-century Ottoman medical miscellany in Judaeano-Arabic and Hebrew, written in honour of the teacher and physician Rabbi Reuven Roza from Eliezer Roza, in 1726. It contains texts of three medical treatises and a glossary of medical terms in Judaeano-Occitan. The findings reveal that the 18th-century medical register retains many conservative grammatical features, as well as showing how obviously the medical register differs from utilitarian prose. Additionally, it was somewhat surprising to see the similarities existing in 14th-century Arabic and 18th-century Judaeano-Arabic texts. This shows firstly how little the medical texts were adapted to Early Modern audiences, in comparison to the translations of the sacred texts šarḥ (pl. šurūḥ) for instance and, secondly, the education level of the intended audience of the medical works. We are proud that Ani is one of our Honorary PhD Scholars.



Mesrop Mashtots
Institute of Ancient
Manuscripts 'The
Matenadaran', Armenia



Las Tres Culturas

Dr Rodrigo García-Velasco has been developing three avenues of research relating to the Medieval interactions between *Las Tres Culturas*, as the three Abrahamic faiths are known in Spain and Portugal. In the first, he studied Visigothic law in search of the origins of Christian legislation of religious minorities. The second explored the adoption of Islamic land property law by Christians during the Castilian and Aragonese conquests of al-Andalus. Finally, he has also looked at the 19th-century philosophical underpinnings of the concept of Jewish-Christian-Muslim coexistence, better known as *Convivencia*. These projects reconsider the legal and intellectual frameworks by which we approach Medieval interactions between the Abrahamic faiths, and what these interactions mean today. He will publish his results in 2021 and 2022. The project was funded by an HISPANEX 2018 grant from the Spanish Ministry of Culture. Dr García-Velasco is currently developing a project on Jewish and Muslim litigants in Christian Iberian courts of law during the 12th and 13th centuries.



Michael Lupi de Çandiu
'Baptism of a Moor'
J. Paul Getty Museum

Gender & Religion Today

Research Fellow **Dr Lea Taragin-Zeller** and Dr Emma Harris are creating a new online course offering fresh perspectives on gender and religion. Taking an interdisciplinary and comparative approach, the course will examine the historical, theological, social and legal transformations in the ways gendered identities are constructed, practised and negotiated in religious contexts. Ranging from feminist rereadings of canonical texts to everyday life issues, as well as legal issues around marriage and divorce, we draw on research-based insights and dynamic religious activists, to offer a varied picture of the ways gender and religion are practised, negotiated and lived today. Funded by the **Randeree Charitable Trust** and **Dangoor Education, The Exilarch's Foundation**, the course will include eight 5-minute videos showcasing the ways academic and social activists negotiate gender and religion in their everyday lives. These resources will form part of the associated schools programme. Contact lz378@cam.ac.uk for further information.



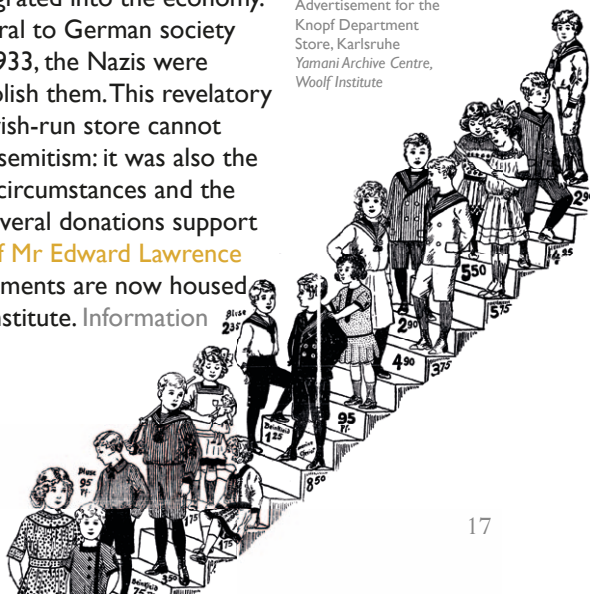
How do Gender and Religion influence each other?

The Kaiser, Hitler & the Jewish Department Store

Our Alumni & Supporter Relations Manager **Dr John F. Mueller**, an Affiliate Researcher at the Institute, has been researching and writing this book in his spare time, building on his PhD thesis. The book, to be published by Bloomsbury in late 2021, confirms how, contrary to Nazi claims, Jewish-owned department stores in Germany were decent employers, popular with customers and well integrated into the economy. In fact, such institutions were so integral to German society that, when Hitler came to power in 1933, the Nazis were forced to abandon their pledge to abolish them. This revelatory history argues that the end of the Jewish-run store cannot solely be attributed to the rise of antisemitism: it was also the consequence of pre-existing financial circumstances and the indifference of the German people. Several donations support his work, including a gift in memory of **Mr Edward Lawrence KStj. John's** collection of historic documents are now housed at the Yamani Archive Centre at the Institute. Information on launch: jfm39@cam.ac.uk



Advertisement for the Knopf Department Store, Karlsruhe
Yamani Archive Centre,
Woolf Institute





Historic Photograph of Visitors to the Najaf Mosque

Nation Building, Colonialism & the Emergence of Iraqi Shi'ism in Hashemite Iraq

Chris Cooper-Davies' PhD research explores how the Shi'i community in Iraq responded to the momentous political, social and economic changes which swept across the Middle East in the early twentieth century. Using journals published in the city of Najaf by Iraqi intellectuals and clerical figures, he explores how the community navigated imperial decline, nationalist ascent, economic and political marginalisation, social and religious reform, as well as issues of sectarianism. Chris argues that a new generation of nationalist intellectuals fostered a public sphere in Najaf espousing a modern nationalist and reformist discourse which was, at its core, anti-sectarian. This discourse - although far from coherent or monolithic - distilled national, local and regional concerns, and laid out a vision for social and political reform hybridised from Islamic and western cultural norms and institutions. Chris is **AHRC funded** and an **Honorary PhD scholar at the Woolf Institute**.



An evangelical church in Nashville hosts an anti-Islamophobia workshop.

Truth or Love? Orthodoxy, Pluralism & the Ethics of Relationships at a Church in Tennessee

Samuel Victor is currently in the midst of 18-months of field research for his PhD in social anthropology. His research is centred around an evangelical church in Nashville, Tennessee and examines the ways in which churchgoers conceive and perceive of the boundaries of their community in an increasingly multicultural city, as well as the moral ambitions that motivate their engagement in social justice activism, including anti-Islamophobia efforts with local mosques. Sam's ethnography grapples directly and critically with the moral paradoxes of normative pluralist discourses (both religious and secular) and in so doing hopes to contribute to the Woolf Institute's commitment to the in-depth examination of people's lived experiences of interfaith engagement. Sam's work is funded by a **Woolf Institute Cambridge Scholarship**, as well as research grants from **The Spalding Trust**.

Get Involved



A simple way to create a lasting legacy

For many people, a gift in their Will is a good way to make a significant and lasting contribution. It may cost nothing in your lifetime, yet provide you with much satisfaction and peace of mind. After you have provided for family and friends, please consider leaving a legacy to the Woolf Institute. A donation to the Woolf Institute in your Will allows us to flourish far into the future by enabling the Institute to support scholarship, research and outreach activities to develop the conditions for a more tolerant society.

Our work to promote better relations between religions can be your legacy. A gift, however large or small, may be directed towards any area of our work. The most useful contributions are those for general purposes, as they allow us to respond to changing need in years to come.

By writing a Will, which can be a simple process, you make things easier for your family on your death. Even if you do not have a huge estate, it ensures that your property is left to those whom you wish to benefit. Making a gift in your Will is an opportunity to make a real difference to the Institute's work, even for those with current financial commitments. The Woolf Institute relies upon donations to invest in future generations of researchers, students and outreach activities, which will make a lasting impact on the world.

All gifts left to registered charities in a Will are exempt from inheritance tax in the UK and could reduce the inheritance tax due on your estate. In many other countries, a gift in your Will can have tax benefits. Ask your solicitor or accountant, or contact us at development@woolf.cam.ac.uk. Thank you for considering including the Woolf Institute in your Will.

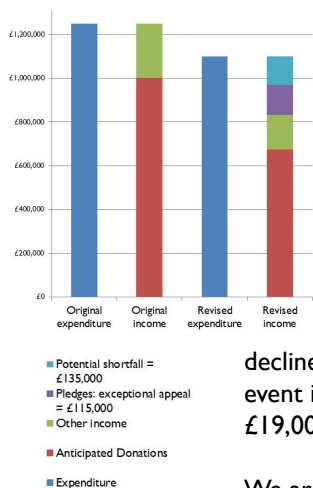


Amy Rhys-Davies
Director of Services &
Administration
Company Secretary

Finance

The Institute is funded primarily by philanthropy – on average around £1,000,000 of our £1,250,000 annual running cost is covered by donations. The balance of our income results from training contracts, events, lettings and conference business.

Following the introduction of COVID-19 prevention measures, the Institute reacted swiftly, to adapt to the changed ways in which we must operate. Like so many organisations, the Trustees and Management Team have had to make tough decisions, despite carefully stewarding the Institute's finances before the crisis and all staff members being proactive in finding solutions to enable work to continue effectively.



The Institute has used the furlough scheme for some staff, cancelled or reduced contractor work or fees; accepted voluntary salary sacrifices; and changed staff deployments, including, sadly, two redundancies. These reduce our expected running costs to £1,100,000 in 2020/21. Despite these changes, we anticipate a shortfall in income against costs of approximately £250,000, resulting from a reduction or elimination of events income and anticipated lower levels of philanthropic giving as incomes and investment values decline. For example, in April-July 2020 the Institute had no event income: in the same period in 2019, it was more than £19,000.

We are very grateful to some of our longest-standing supporters and Trustees for pledges amounting to £115,000 towards this anticipated shortfall. These very generous gifts are unrestricted and in addition to any that they might already have intended to give. This leaves a balance of £135,000 to raise or to draw down from expendable reserves to allow us to continue our revised activities in 2020/21. We will make further cuts if needed as the situation develops and will work via the exceptional appeal and our usual fundraising programme to minimise the drawdown on reserves. Through these measures we believe we can continue to deliver research, teaching, outreach and engagement activities and materials to encourage a world in which collaborative discussion and constructive engagement overcome prejudice and intolerance.

Friends of the Woolf Institute

Alumni and supporters are the cornerstone of the Woolf Institute. Across the globe, they are working with us to improve relations between religion and society. You can stay in touch by listening to our podcasts, reading or writing for the Woolf blog, watching Woolf videos, accessing our online resources or taking an online course. And don't forget to share Woolf posts and events on Facebook, Twitter and Instagram. A great deal of what we offer is free at the point of delivery, thanks to gifts from Woolf Alumni and Donors.

You can support the Institute's work and become a member of our Friends group, which is themed on a Pomegranate Tree - a symbol of life, abundance and prosperity in the Abrahamic faiths. We are hugely grateful to all our Friends and have some special acknowledgements.

£5/month - a 'Silver Leaf'

- Annual Calendar with the latest research news and events in the coming year, sent by post (see below for rates from outside the UK)
- Exclusive invitations to Woolf events

£10/month - a 'Gold Leaf'

- Annual Calendar by post
- Exclusive invitations to Woolf events
- Mentioned in the Book of Donors (unless you wish to remain anonymous)
- Access to Woolf Library by appointment

Set up a regular gift via standing order
and we'll send your welcome letter:

Account Name: Woolf Institute

Bank Name CAF Bank Ltd

Sort Code 40-52-40

Account Number 00011470

Reference Surname + FND

From outside the UK, monthly donations
or annual equivalent

Euro Zone: Silver - 8EUR, Gold - 13EUR

US: Silver - \$10, Gold - \$15

Canada: Silver - 14C\$, Gold - 21C\$

See overleaf for details of tax-efficient giving
from outside the UK



Dr John F. Mueller
Alumni & Supporter
Relations Manager

Your Benefits

Making your donation work for you too

Tax-efficient giving is possible in the UK via the Gift Aid scheme. You must be a UK taxpayer and understand that if you pay less Income Tax and/or Capital Gains Tax than the amount of Gift Aid claimed on all your donations in any given tax year, it is your responsibility to pay any difference. If you pay Income Tax at the higher or additional rate and want to receive the additional tax relief due to you, you must include all your Gift Aid donations on your Self-Assessment tax return or ask HM Revenue and Customs to adjust your tax code.

Tax-efficient giving is possible in North America via CAF America and CAF Canada and in many European countries via TransNational Giving Europe. Please contact Dr John F. Mueller on development@woolf.cam.ac.uk for more information.

Making a donation by giving shares is one of the most tax-efficient ways that you can give. In the UK, you can **claim Income Tax** relief on the current value of the shares and an exemption from **Capital Gains Tax** on those shares. Please contact development@woolf.cam.ac.uk or your accountant for further information.

giftaid it





Donate

If you wish to support a particular aspect of the Woolf Institute's work, please tell us by email or letter. Unrestricted donations are most helpful, as they allow us to use your gift where it is most needed. You may wish to support a specific project, such as: outreach; teaching; student bursaries and scholarships; research; library and facilities. Please use a reference including your name when arranging transfers.

Bank transfer

| | | | |
|--------------|-----------------|-----------|---------------|
| Account Name | Woolf Institute | Bank Name | CAF Bank Ltd. |
| Account No | 00011470 | Sort Code | 40-52-40 |

Please contact us for donations from outside the UK as it may be possible to make these tax-efficiently.

You can set up a **Standing Order** using your online banking and the details above.

Cheques or **Charity Vouchers** should be made payable to 'Woolf Institute' and posted to Woolf Institute, Madingley Road, Cambridge CB3 0UB

You can **Donate Online** at <https://www.woolf.cam.ac.uk/fundraising/donate>

To make a gift with **Gift Aid**, please include your home address and name with your gift, or email the Development Office, and state that you are making the gift under the Gift Aid scheme. This increases the value of your donation to the Woolf Institute by 25% at no cost to you. Your home address is needed to identify you as a current UK taxpayer. If you prefer, we can send you a paper or electronic copy of a Gift Aid form to complete and return.

Are you interested in a tailored package of support? Contact Development, Director Helen Cornish on development@woolf.cam.ac.uk or 01223 761972

The Woolf Institute's vision is one in which discussion and engagement overcome prejudice and intolerance. It combines teaching, research and outreach, focusing on Jews, Christians and Muslims, to foster understanding between people of diverse beliefs and improve the way that people live together in society.

Research Enquiries **Dr Esther-Miriam Wagner**
emw36@cam.ac.uk 01223 761976

Study & Teaching Enquiries **Dr Emma Harris**
eth22@cam.ac.uk 01223 761975

Outreach Enquiries **Dr Katherine O'Lone**
ko358@cam.ac.uk

Donation Enquiries **Dr John F. Mueller**
jfm39@cam.ac.uk 01223 761972

Conference Enquiries **Amy Rhys-Davies**
ar936@cam.ac.uk

Telephone +44 (0)1223 761984
Email enquiries@woolf.cam.ac.uk

Address Madingley Road
Cambridge CB3 0UB

Facebook WoolfInstitute
Twitter Woolf_Institute
YouTube WoolfInstitute
Instagram Woolf.Institute
Podcasts www.woolf.cam.ac.uk/podcasts
Blog www.woolf.cam.ac.uk/blog

Donate www.woolf.cam.ac.uk/fundraising/donate

Charity No 1069589
Company No 3540878

